



# Access To Nature

Jo Lewis, Regional Adviser, South West





# Big Lottery Fund



Access to Nature is funded by Big, under its Changing Spaces Programme

## Mission statement

- BIG are committed to bringing real improvements to communities and the lives of people in most need

£234m is allocated under the Changing Spaces Grant Scheme

- 3 priority strands:
  - Community Spaces – accessible spaces
  - Local community enterprise making links between food, exercise and health
  - Access to the natural environment improving the natural environment and encouraging access



## Access to Nature

Natural England, on behalf of the Access to Nature Consortium submitted a bid to:

- Aim for a lasting increase in people's enjoyment of, access to and engagement with the natural environment
- Operating across England, targeting disadvantaged communities
- BIG provisional award of £25 million (programme as a whole: £31million)
- Run from 2007 to 2014
- Grants range from £50k - £500k -Projected 160-200 grants awarded- that's 18-22 grants in our region.

## Consortium



Bid led by Natural England on behalf of a partnership consortium:

British Waterways  
BTCV  
Environment Agency  
Forestry Commission  
GreenSpace  
Groundwork UK  
Land Restoration Trust  
The National Trust  
Natural England  
RSPB  
The Wildlife Trusts  
The Woodland Trust

# Access to Nature: Our Vision



High quality natural environments which are:

- Highly valued by people and accessible for all
- Rich in wildlife and opportunities for learning, health and wellbeing
- Safe, clean attractive and well used by people for their recreation and enjoyment



## What kind of projects can it fund ?



### Outcome 1:

- A greater diversity and number of people have improved opportunities to experience the natural environment

### Target:

- At least 1 million people to have improved opportunities to actively experience and enjoy the natural environment.

### Activities this could cover:

- Awareness raising events
- Interpretation boards
- guided walks
- Promotion of the need for sustainability
- Awareness of the potential of greenspace



## What kind of projects can it fund ?

### Outcome 2:

- More people having opportunities for learning about the natural environment and gaining new skills.

### Target:

- 125,000 people to benefit from improved information about, and increase the opportunity to participate in, learning skills programmes related to the natural environment, of which:
  - *75,000 people to have a new learning opportunity related to the natural environment by 2014;*
  - *50,000 volunteers to have a new opportunity to actively participate in training and development programmes, gaining new skills by 2014*

### Activities this could cover:

- Volunteer training programmes
- support for school visits
- learning skills programmes
- educational videos, DVD's and CD's

## What kind of projects can it fund ?



### Outcome 3:

- More people able to enjoy the natural environment through investment in access to natural places and networks between sites.

### Target:

- Investment in access links and associated networks to 130 natural places by 2014
- 325,000 people experiencing better links with the natural environment by 2014.

### Activities this could cover:

- footpaths and cycle routes
- multi-use paths
- creation or management of greenways, green corridors, rivers of canals
- green transport links

## What kind of projects can it fund ?



### Outcome 4:

- Richer, more sustainably managed, natural places meeting the needs of communities.

### Target:

- Investment in the quality of 100 natural places meeting the needs of communities.
- 250,000 people benefiting from physical improvements to their local natural environment;
- 5,000 people regularly participating in the care of these natural places over the life time of the project.

### Activities this could cover:

- work to bring together the community and other organisations
- employment of dedicated project officers
- volunteer involvement
- Land purchase where there is no other way of securing management
- sustainable plans for ongoing site management/improvement



## What kind of projects can it fund ?

### Outcome 5:

- An increase in communities sense of ownership of local natural places, by establishing strong partnerships between communities, voluntary organisations, local authorities and others.

### Target:

- 100% of projects actively and positively engaging with local communities

### Activities this could cover:

- work to bring together the community and other organisations
- Volunteer involvement
- Purchase tools equipment and materials
- use green space for the purpose of improving health and well-being
- employment of community liaison officers
- employment of dedicated project officers



## How it will operate

### Guiding principles:

- Projects will involve partnerships between local communities, voluntary and/or statutory bodies
- Involvement of communities in development and implementation of projects
- Projects must contribute to relevant national/regional/local strategies and plans
- Involve robust monitoring of outcomes (eg Collection of base line data)
- Complementing other funding programmes eg: other Award Partners and Breathing Places



## How much can I apply for ?

- Access to Nature will make grant awards of between £50,000 and £500,000.
- In addition will we make a number of larger grants of over 500,000 for projects, which have a national significance.
- The match funding is required as follows:

Grant Requested £	Rate	Match Funding
50,000 and up to 100,000	Up to 90%	10% (no cash requirement)
Over 100,000 and up to 500,000	Up to 80%	20% (minimum 10% in cash)
Over 500,000	Up to 70%	30% (minimum 10% in cash)

*\* A 90% rate means that an organisation receiving this grant will get up to 90% of the total eligible project cost and they will make up the remainder themselves by allocating resources (volunteer time, for example) equivalent to the value of the remaining 10% or more.*

# How will it operate – Targeting



- Target beneficiaries are disadvantaged communities including those:
  - Under represented in contact with the natural environment
  - Experiencing social exclusion
  - Lacking opportunities to access the natural environment
- Target audience for grant scheme applications:
  - Voluntary organisations
  - Recognised / constituted community groups
  - Local authorities and statutory groups



# How will we target Access to Nature?



- A Targeting Plan for each region is being developed to identify communities most in need.
- Targeting Plans need to consider the following priorities for funding:
  - Areas of high social and economic deprivation. (should be in the lowest 10% of communities identified through data from Indices of Multiple Deprivation, Super Output Areas)
  - Demonstrable environmental deprivation; and
  - Non geographic priority groups
  - In our region, parts of Cornwall, North Devon Bristol, Plymouth, etc.

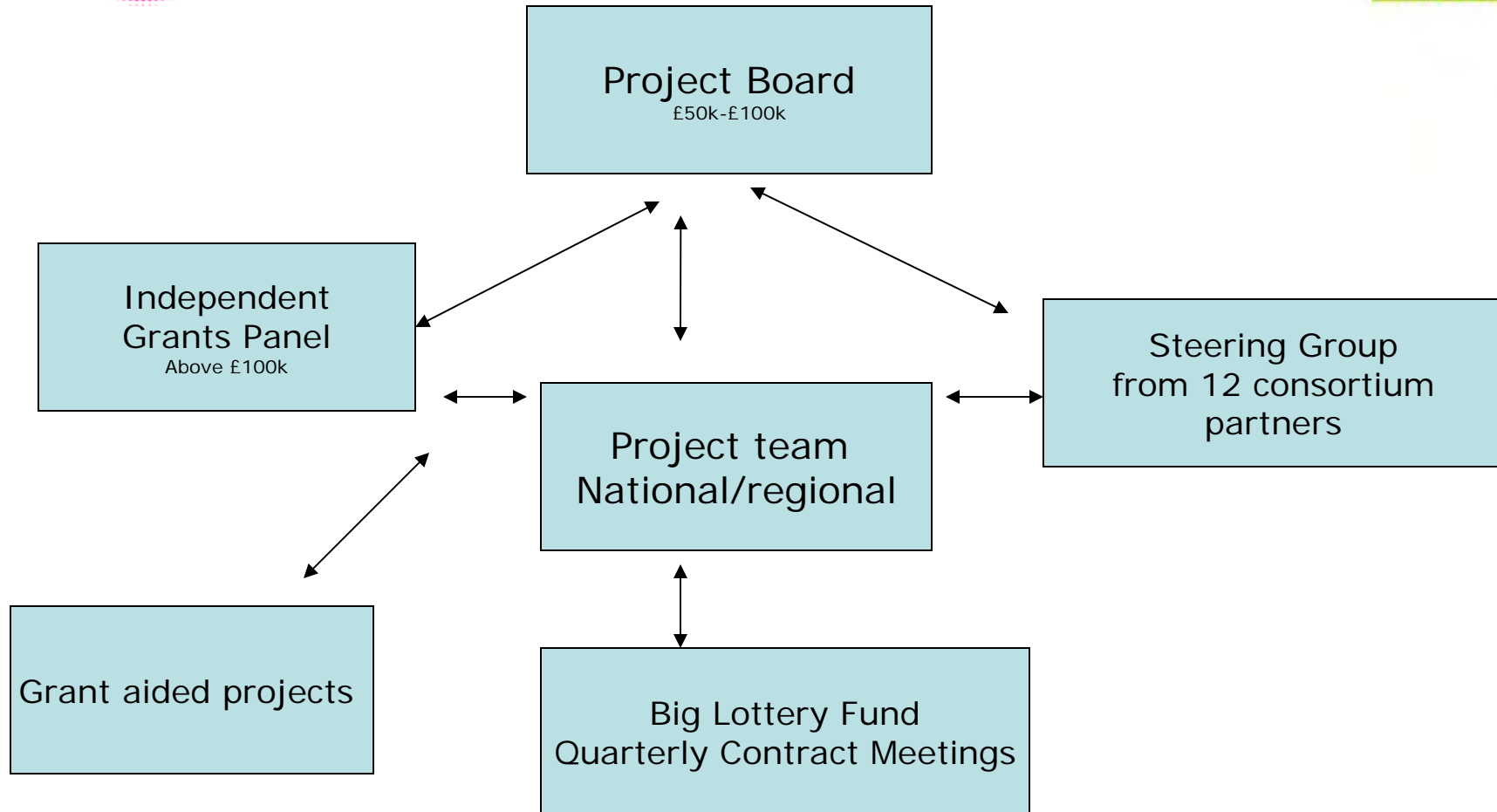


## What types of schemes will be funded?

- Can fund post-holders to implement schemes on the ground
- Capital items can be funded as well as revenue
- Could fund site improvements for biodiversity value
- Able to fund land acquisition
- Most (80%) of our funding will support projects that benefit areas of high socio-economic deprivation and /or environmental deprivation.



# Access to Nature - Structure



## How can I apply to Access to Nature?



- Access to Nature will be open for applications in early 2008
- Applications can be made on-line
- We will operate a two stage application process:
  1. Stage 1 is an expression of interest
  2. Stage 2 is a more detailed application



## Where can I find out more information?

- Via the web:  
<http://www.naturalengland.org.uk/leisure/grants-funding/default.htm>
- To receive updates, email:  
[accesstonature@naturalengland.org.uk](mailto:accesstonature@naturalengland.org.uk)
- In advance of the application process going on-line, now is a good time to begin to think about what kinds of project you may wish to start. Engage with local people, partners and stakeholders and find out what ideas they might have.

## Changing Spaces



As well as Access to Nature there are currently two other grant schemes under Changing Spaces. These are:

1. Community Spaces
2. Local Food



## 1. Community Spaces

Managed by Groundwork UK.

- £50m available nationally
- Aims to improve green and open spaces
- Will provide trained facilitators to help communities
- Grants available from early 2008 up to £50,000
- Visit [www.community-spaces.org.uk](http://www.community-spaces.org.uk) for more information.



Other schemes under Changing Spaces cont.d

## 2. Local Food

Managed by the Royal Society of Wildlife Trusts (RSWT)

- £50m available nationally
- Grants to be distributed to wide variety of food related projects to help make locally grown food more accessible to communities

Communities will benefit from:

- Improved health/ well being through better nutrition
- Stronger local economies through creation of social enterprises
- Sustainability through better use of resources



## Local Food Continued.

- Grants from £2,000-£500,000 will be available to not-for-profit groups, from early 2008
- Growing, processing, marketing and distributing local food and composting will all be eligible activities
- For more information see: [www.rswt.org/localfood](http://www.rswt.org/localfood)

Finally.....



Thank you for listening

**Jo Lewis, Access to Nature Adviser, South West**

**Tel: 0117 959 8567**

**Email: [jo.Lewis@naturalengland.org.uk](mailto:jo.Lewis@naturalengland.org.uk)**

